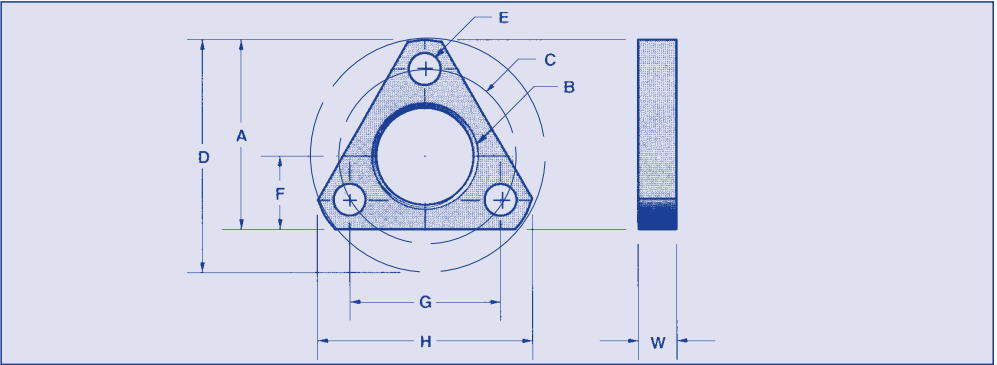


# MOUNTING FLANGES

**THREADS**  
5/8-18 7 15/16-16

TRIANGULAR OR ROUND CONFIGURATION  
COMMERCIAL QUALITY



**Material: Lightweight Structural Plastic.**

**ORDER BY CATALOG NUMBER**

For use with MAH-A1 AND MAH-A2 series Plain and Anti-backlash nuts.

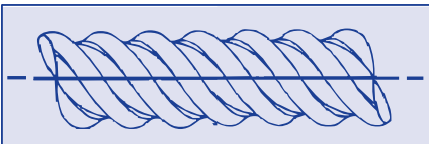
Cat. No	Height A	Thread B	Bolt Circle Diameter C	Clearance Diameter D	Hole Diameter E	Screw Size	Center Height F	Hole Spacing G	Overall Width H	Thickness W
MAH-B1-1	1.219	5/8-18	1.125	1.50	1.98/.208	#10	.469	.974	1.41	.250
MAH-B1-2	1.406	15/16-16	1.375	1.75	1.98/.208	#10	.531	1.191	1.62	.375

To order round or triangular flanges, add **R** or **T** to end of catalog number.

# ROLLED ACME LEAD SCREWS

**SCREW DIA.**  
1/4 TO 5/8

COMMERCIAL QUALITY



Lead Screws to be used with MAH-A1 and MAH-A2 series Plain and Anti-Backlash nuts. To specify overall length, add length in inches to end of catalog number.

**Material: 300 Series Stainless Steel.** Special journal end machining available.

LEAD ACCURACY: .003" per foot.

**ORDER BY CATALOG NUMBER**

Cat. No.	Size	Lead	Thread	Starts
MAS-A1-0	3/16-20	.050	Acme	1
MAS-A1-1	1/4-20	.050	Acme	1
MAS-A1-2	1/4-16	.063	Acme	1
MAS-A1-3	5/16-12	.167	Acme	2
MAS-A1-4	5/16-8	.250	stub Acme	2
MAS-A1-5	5/16-8	.500	stub Acme	4
MAS-A1-6	3/8-20	.050	Acme	1
MAS-A1-7	3/8-16	.063	Acme	1
MAS-A1-8	3/8-12	.083	Acme	1
MAS-A1-9	3/8-10	.100	Acme	1
MAS-A1-10	3/8-8	.125	stub Acme	1
MAS-A1-11	3/8-12	.167	stub Acme	2
MAS-A1-12	3/8-10	.200	stub Acme	2
MAS-A1-13	3/8-8	.250	stub Acme	2

Cat. No.	Size	Lead	Thread	Starts
MAS-A1-14	3/8-8	.375	stub Acme	3
MAS-A1-15	3/8-8	.500	stub Acme	4
MAS-A1-16	3/8-5	1.000	stub Acme	5
MAS-A1-17	3/8-4	1.200	stub Acme	5
MAS-A1-18	7/16-8	.250	stub Acme	2
MAS-A1-19	7/16-8	.500	stub Acme	4
MAS-A1-20	1/2-12	.083	Acme	1
MAS-A1-21	1/2-10	.100	Acme	1
MAS-A1-22	1/2-10	.200	stub Acme	2
MAS-A1-23	1/2-4	.500	Ball	2
MAS-A1-24	5/8-10	.100	Acme	1
MAS-A1-25	5/8-8	.125	stub Acme	1
MAS-A1-26	5/8-5	.200	Acme	1
MAS-A1-27	5/8-10	.200	stub Acme	2

**NORDEX**

**(800) 243-0986**  
In CT (203) 775-4877

**6M**