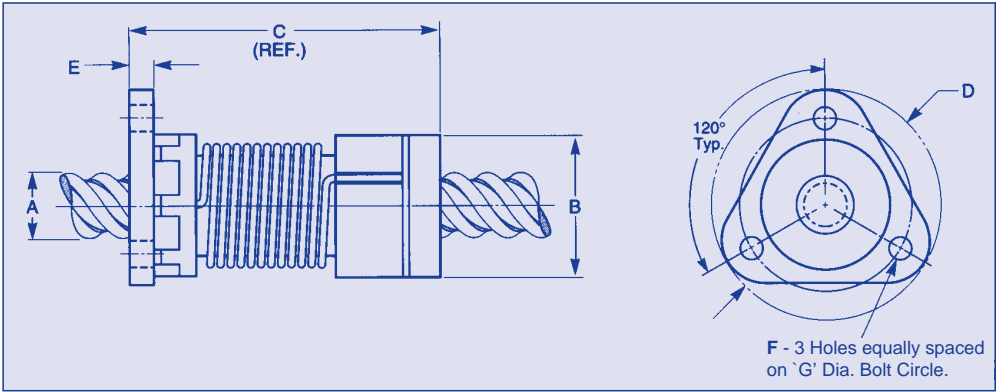


LOW DRAG TORQUE- ANTI-BACKLASH NUT

THREADS
3/8"

MEDIUM DUTY - 20 LB DESIGN LOAD
PRECISION QUALITY



Material: Polyacetal, Engineered Plastic. Integrally molded flange included.
Order MAS-A2 series lead screws (.0006 lead accuracy) separately.

ORDER BY CATALOG NUMBER

| Catalog Number | Nominal Screw Diameter | Lead In or mm | Design Load (Dynamic) | Drag Torque | Efficiency |
|----------------|------------------------|---------------|-----------------------|--------------------------|------------|
| MAH-A4-1 | 3/8" | 0.025" | 20 LBS (10kg) | 1-3 oz-in (.007 - .02NM) | 21 |
| MAH-A4-2 | | 0.050" | | | 35 |
| MAH-A4-3 | | 0.083" | | | 50 |
| MAH-A4-4 | | 0.100" | | | 53 |
| MAH-A4-5 | | 0.200" | | | 69 |
| MAH-A4-6 | | 0.250" | | | 60 |
| MAH-A4-7 | | 0.300" | | | 76 |
| MAH-A4-8 | | 0.400" | | | 79 |
| MAH-A4-9 | | 0.500" | | | 81 |
| MAH-A4-10 | | 0.750" | | | 84 |
| MAH-A4-11 | | 1.000" | | | 84 |
| MAH-A4-12 | | 1.200" | | | 84 |
| MAH-A4-13 | | 1.500" | | | 84 |
| MAH-A4-14 | | 2,0 mm | | | 47 |
| MAH-A4-15 | | 4,0 mm | | | 65 |
| MAH-A4-16 | | 5,0 mm | | | 69 |
| MAH-A4-17 | | 12,0 mm | | | 80 |
| MAH-A4-18 | | 25,0 mm | | | 84 |

Standard Mounting Dimensions

| Screw Dia. A | Nut Diameter B (Max) | Nut Length C | Flange Dia. D | Flange Width E | Mounting Hole F | Bolt Circle Dia. G |
|------------------|----------------------|-------------------|-------------------|------------------|------------------|---------------------|
| 3/8" (9,53mm) | .80" (20,32mm) | 2.0" (50,80mm) | 1.5" (38,10mm) | .19" (4,83mm) | .20" (5,08mm) | 1.125" (28,58mm) |

NORDEX

(800) 243-0986 10M
In CT (203) 775-4877